

# Adapt Barrier Rings Case Study

## Overview

Mr. G is a 60-year-old male, with an emergency sub-total colectomy and formation of a Brooke's ileostomy for perforated diverticular disease. Whilst flying back from a holiday in Canada, he collapsed from a severe per rectum (PR) bleed. He had no medical history of PR bleeding except for an isolated incident 11 years ago.

He was diagnosed with a rare blood condition: Von Willebrand disease (Type 2 Normandy). Von Willebrand factor is a protein found in the blood necessary for clotting. There are three different types of deficiencies. They are mainly genetic and affect both females and males. Symptoms include: bruising more easily, slower healing, frequent and often severe nose bleeds, and for women, heavy periods. Diagnosis and treatment are key in managing this condition. Type 2 Normandy requires Factor VIII (8) when undergoing surgery as this will ensure that blood clotting and healing occur.

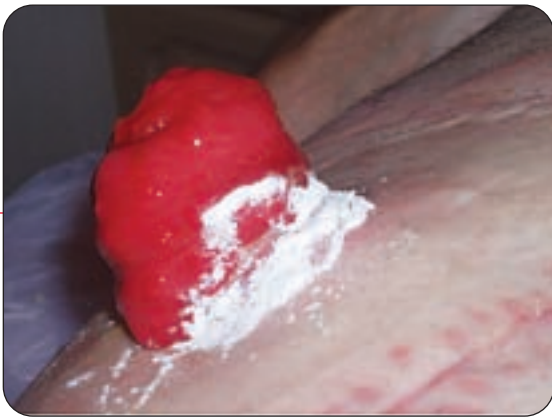


*Ileostomy and laparotomy wound three weeks post-operatively*

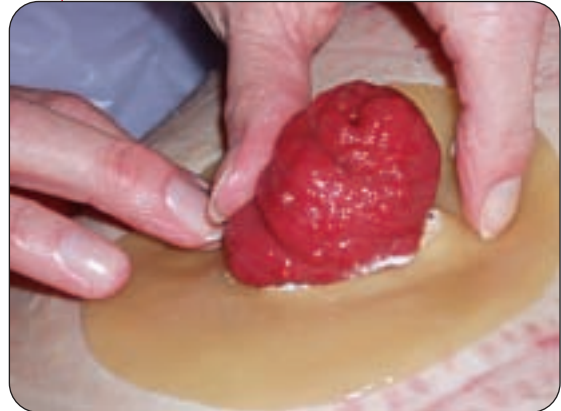
**Problem:** Given this gentleman's condition, it is extremely important that his peristomal skin remains intact, and that any increased bleeding from his ileostomy is managed accordingly. Because of emergency surgery, he didn't have time to receive pre-operative counselling or siting. Since he has difficulty seeing the stoma, his wife facilitates his pouch change. His stoma is well-spouted but rather large and located just above his waist-line. His stoma is larger in the middle and narrower at the base, making it difficult to cut the aperture of the pouch to fit snugly around it.

**Solution:** He achieves a two-day wear time by using a large Hollister **Adapt Barrier Ring** that is moulded to the shape of his stoma. He uses Hollister **Adapt Powder** when his skin is slightly red to help prevent any further breakdown.

**Outcome:** He has found that without the Adapt Barrier Ring, the pouch leaks more readily and his skin breaks down quickly. The Adapt Barrier Ring provides a seal around his ileostomy as well as an even surface to allow the pouch to adhere securely to the peristomal skin.



*Adapt Powder liberally applied to peristomal skin*



*Adapt Barrier Ring been moulded into shape around ileostomy by his wife*



*Adapt Barrier Ring in situ*

The Hollister Adapt Barrier Rings are made from a **Flextend M** barrier that offers extended wear time due to its unique ability to handle fluid (suitable for perspiration and stoma effluent).

### **Conclusion:**

The **Adapt** Accessories allow this gentleman to feel secure and ensures that optimum wear time is achieved.

*Hollister gratefully acknowledges the assistance and caring of the following nurses:*

*Lesley Law, Heather Dennis and Caroline Rudoni  
St. Georges NHS Trust, London.*



**Hollister Incorporated**  
2000 Hollister Drive  
Libertyville, Illinois 60048  
1.888.740.8999

Distributed in Canada by  
**Hollister Limited**  
95 Mary Street  
Aurora, Ontario L4G 1G3  
1.800.263.7400

[www.hollister.com](http://www.hollister.com)